

**Anti-Separase Antibody**  
**Rabbit polyclonal antibody to Separase**  
**Catalog # AP60459****Specification**

---

**Anti-Separase Antibody - Product Information**

Application	WB, IF/IC, IHC
Primary Accession	<a href="#">Q14674</a>
Reactivity	Human, Mouse
Host	Rabbit
Clonality	Polyclonal
Calculated MW	233175

**Anti-Separase Antibody - Additional Information****Gene ID** 9700**Other Names**

ESP1; KIAA0165; Separin; Caspase-like protein ESPL1; Extra spindle poles-like 1 protein; Separase

**Target/Specificity**

Recognizes endogenous levels of Separase protein.

**Dilution**

WB~~WB (1/500 - 1/1000), IH (1/100 - 1/200), IF/IC (1/100 - 1/500)

IF/IC~~N/A

IHC~~1:100~500

**Format**

Liquid in 0.42% Potassium phosphate, 0.87% Sodium chloride, pH 7.3, 30% glycerol, and 0.09% (W/V) sodium azide.

**Storage**

Store at -20 °C. Stable for 12 months from date of receipt

**Anti-Separase Antibody - Protein Information****Name** ESPL1**Synonyms** ESP1, KIAA0165**Function**

Caspase-like protease, which plays a central role in the chromosome segregation by cleaving the SCC1/RAD21 subunit of the cohesin complex at the onset of anaphase. During most of the cell cycle, it is inactivated by different mechanisms.

**Cellular Location**

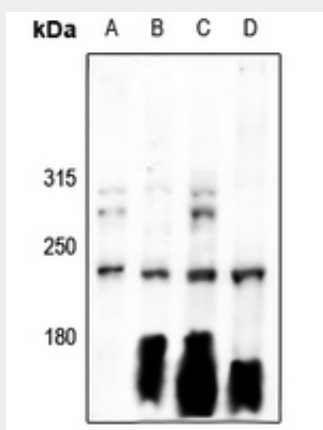
Cytoplasm. Nucleus.

## Anti-Separase Antibody - Protocols

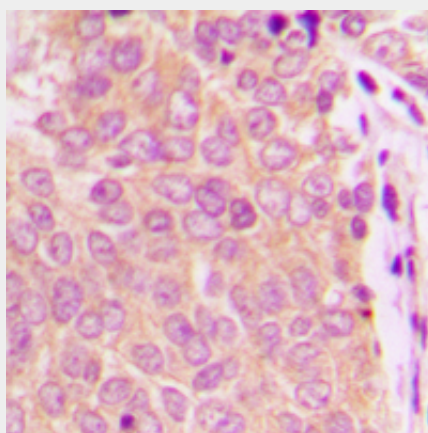
Provided below are standard protocols that you may find useful for product applications.

- [Western Blot](#)
- [Blocking Peptides](#)
- [Dot Blot](#)
- [Immunohistochemistry](#)
- [Immunofluorescence](#)
- [Immunoprecipitation](#)
- [Flow Cytometry](#)
- [Cell Culture](#)

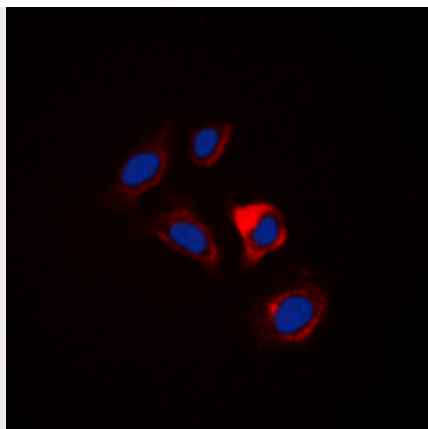
## Anti-Separase Antibody - Images



Western blot analysis of Separase expression in Hela (A), SGC7901 (B), HEK293T (C), CT26 (D) whole cell lysates.



Immunohistochemical analysis of Separase staining in human breast cancer formalin fixed paraffin embedded tissue section. The section was pre-treated using heat mediated antigen retrieval with sodium citrate buffer (pH 6.0). The section was then incubated with the antibody at room temperature and detected using an HRP conjugated compact polymer system. DAB was used as the chromogen. The section was then counterstained with haematoxylin and mounted with DPX.



Immunofluorescent analysis of Separase staining in HuvEc cells. Formalin-fixed cells were permeabilized with 0.1% Triton X-100 in TBS for 5-10 minutes and blocked with 3% BSA-PBS for 30 minutes at room temperature. Cells were probed with the primary antibody in 3% BSA-PBS and incubated overnight at 4 °C in a humidified chamber. Cells were washed with PBST and incubated with a DyLight 594-conjugated secondary antibody (red) in PBS at room temperature in the dark. DAPI was used to stain the cell nuclei (blue).

#### **Anti-Separase Antibody - Background**

KLH-conjugated synthetic peptide encompassing a sequence within the center region of human Separase. The exact sequence is proprietary.